



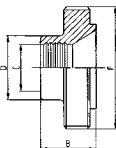
RIDUZIONE FILETTATA MR.
EG. MALE REDUCER
NEZ FILETÉ RÉDUIT DR.
MACHO R. REDUCCION MR.

RIDUZIONE LISCIA MR.
EG. LINER REDUCER
DOUILLE RÉDUITE DR.
CASQUILLO R. REDUC. MR.

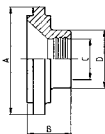
RIDUZIONE FILETTATA SR.
WG. MALE REDUCER
NEZ FILETÉ RÉDUIT DR.
MACHO R. REDUCCION SR.

RIDUZIONE LISCIA SR.
WG. LINER REDUCER
DOUILLE RÉDUITE SR.
CASQUILLO R. REDUC. SR.

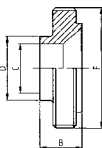
105 I



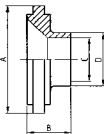
115 I



106 I



116 I



DN	B	C	D	F	gr
38/25	25,0	25,4	29,2	50-8	120
51/25	25,0	25,4	29,2	64-8	140
51/38	28,0	38,1	42,7	64-8	160
63/38	30,0	38,1	42,7	77-8	230
63/51	30,0	50,8	56,2	77-8	270
76/38	30,0	38,1	42,7	91-8	310
76/51	35,0	50,8	56,2	91-8	360
76/63	35,0	63,5	69,9	91-8	410
101/63	35,0	63,5	69,9	118-8	620
101/76	35,0	76,2	82,6	118-8	730

DN	A	B	C	D	gr
38/25	47,0	25,0	25,4	29,0	110
51/25	60,5	25,0	25,4	29,0	185
51/38	60,5	28,0	38,1	42,5	150
63/38	74,0	30,0	38,1	42,5	230
63/51	74,0	30,0	50,8	56,0	205
76/38	87,5	30,0	38,1	42,5	390
76/51	87,5	35,0	50,8	56,0	375
76/63	87,5	35,0	63,5	69,7	320
101/63	114,1	35,0	63,5	69,7	570
101/76	114,1	35,0	76,2	82,3	540

DN	B	C	D	F	gr
38/25	25,0	22,1	25,4	50-8	130
51/25	25,0	22,1	25,4	64-8	180
51/38	25,0	34,8	38,1	64-8	210
63/38	25,0	34,8	38,1	77-8	250
63/51	25,0	47,5	50,8	77-8	290
76/38	25,0	34,8	38,1	91-8	320
76/51	25,0	47,5	50,8	91-8	380
76/63	25,0	60,2	63,5	91-8	430
101/63	25,0	60,2	63,5	118-8	500
101/76	25,0	72,9	76,2	118-8	590

DN	A	B	C	D	gr
38/25	47,0	18,0	22,1	25,4	95
51/25	60,5	18,0	22,1	25,4	165
51/38	60,5	18,0	34,8	38,1	150
63/38	74,0	18,0	34,8	38,1	235
63/51	74,0	18,0	47,5	50,8	190
76/38	87,5	18,0	34,8	38,1	345
76/51	87,5	18,0	47,5	50,8	305
76/63	87,5	18,0	60,2	63,5	250
101/63	114,1	18,0	60,2	63,5	530
101/76	114,1	18,0	72,9	76,2	480

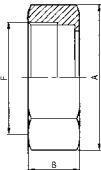
GIRELLA ESAGONALE
HEX NUT
ÉCROU HEXAGONAL
TUERCA EXAGONAL

GIRELLA CIEGA + CAT.
ROUND NUT + CHAIN
ÉCROU BOUCHON + CH.
TUERCA CIEGA + CAD.

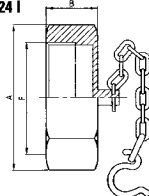
GIRELLA TONDA LISCIA
ROUND NUT
ÉCROU ROND LISSE
TUERCA REDONDA LISA

GIR. TONDA CON TACCHE
NOTCHES ROUND NUT
ÉCROU À CRANS
TUERCA REDONDA

121 I



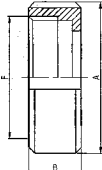
124 I



122 I



123 I



DN	A	B	F	gr
25	46,0	30,0	37-8	185
38	60,0	30,0	50-8	275
51	75,0	30,0	64-8	400
63	90,0	30,0	77-8	580
76	105,0	30,0	91-8	700
101	134,0	30,0	118-8	1.100

DN	A	B	F	gr
25	46,0	30,0	37-8	245
38	60,0	30,0	50-8	405
51	75,0	30,0	64-8	620
63	90,0	30,0	77-8	910
76	105,0	30,0	91-8	1.050
101	134,0	30,0	118-8	1.530

DN	A	B	F	gr
25	44,5	30,0	37-8	130
38	57,0	30,0	50-8	140
51	70,0	30,0	64-8	180
63	85,5	30,0	77-8	290
76	101,5	30,0	91-8	450
101	129,0	30,0	118-8	900

DN	A	B	F	gr
25	48,0	30,0	37-8	165
38	64,0	30,0	50-8	255
51	77,0	30,0	64-8	310
63	91,0	30,0	77-8	360
76	106,0	30,0	91-8	500
101	135,0	30,0	118-8	900