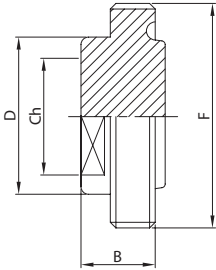
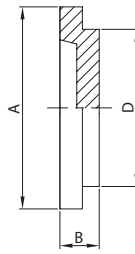
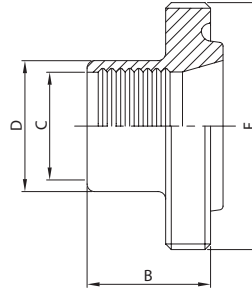
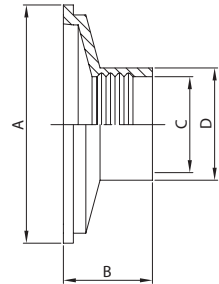


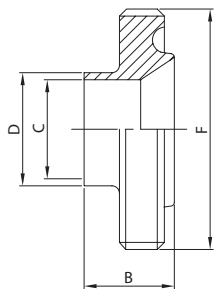
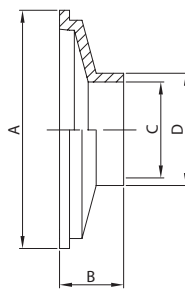
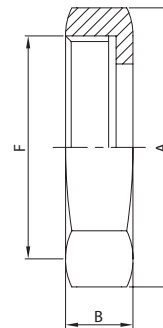
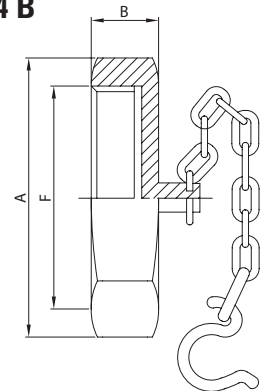
**BLANK MALE**
**LINER  
BLANK LINER**
**EG. MALE REDUCER**
**EG. LINER REDUCER**
**104 B**

**114 B**

**105 B**

**115 B**


DN	B	Ch	D	F	gr
25	24,0	30,0	38,0	46-8	50
38	24,0	40,0	50,0	58-8	80
51	24,0	55,0	65,5	73-6	130
63	24,0	65,0	76,0	85-6	190
76	24,0	79,5	89,0	98-6	250
101	24,0	104,0	114,0	123-6	390

DN	A	B	D	gr
25	41,2	8,7	32,5	40
38	53,9	8,7	45,2	70
51	66,7	8,7	58,0	110
63	79,4	8,7	70,6	160
76	92,0	8,7	83,3	210
101	117,2	8,7	109,0	330

DN	B	C	D	F	gr
38/25	30,3	25,4	32,5	58-8	190
51/25	30,3	25,4	32,5	73-6	280
51/38	35,3	38,1	45,2	73-6	330
63/38	35,3	38,1	45,2	85-6	350
63/51	35,3	50,8	58,0	85-6	410
76/38	40,3	38,1	45,2	98-6	440
76/51	40,3	50,8	58,0	98-6	510
76/63	40,3	63,5	70,6	98-6	580
101/63	40,3	63,5	70,6	123-6	640
101/76	40,3	76,2	83,3	123-6	740

DN	A	B	C	D	gr
38/25	53,9	28,0	25,4	32,5	150
51/25	66,7	30,0	25,4	32,5	170
51/38	66,7	30,0	38,1	45,2	180
63/38	79,4	35,0	38,1	45,2	210
63/51	79,4	35,0	50,8	58,0	220
76/38	92,0	39,0	38,1	45,2	300
76/51	92,0	39,0	50,8	58,0	310
76/63	92,0	39,0	63,5	70,6	350
101/63	117,2	39,0	63,5	70,6	400
101/76	117,2	39,0	76,2	83,3	430

**WG. MALE REDUCER**
**WG. LINER REDUCER**
**HEX NUT**
**ROUND NUT + CHAIN**
**106 B**

**116 B**

**121 B**

**124 B**


DN	B	C	D	F	gr
38/25	33,0	22,1	25,4	58-8	140
51/25	35,0	22,1	25,4	73-6	290
51/38	35,0	34,8	38,1	73-6	330
63/38	40,0	34,8	38,1	85-6	340
63/51	40,0	47,5	50,8	85-6	390
76/38	44,0	34,8	38,1	98-6	420
76/51	44,0	47,5	50,8	98-6	490
76/63	44,0	60,2	63,5	98-6	560
101/63	44,0	60,2	63,5	123-6	650
101/76	44,0	72,9	76,2	123-6	760

DN	A	B	C	D	gr
38/25	53,9	20,0	22,1	25,4	150
51/25	66,7	20,0	22,1	25,4	170
51/38	66,7	20,0	34,8	38,1	180
63/38	79,4	20,0	34,8	38,1	210
63/51	79,4	20,0	47,5	50,8	220
76/38	92,0	20,0	34,8	38,1	300
76/51	92,0	20,0	47,5	50,8	310
76/63	92,0	20,0	60,2	63,5	350
101/63	117,2	20,0	60,2	63,5	400
101/76	117,2	20,0	72,9	76,2	430

DN	A	B	F	gr
25	51,0	22,2	46-8	125
38	65,0	22,2	58-8	205
51	80,0	22,2	73-6	270
63	92,0	22,2	85-6	450
76	104,0	22,2	98-6	470
101	130,0	22,2	123-6	550

DN	A	B	F	gr
25	51,0	22,2	46-8	230
38	65,0	22,2	58-8	320
51	80,0	22,2	73-6	440
63	92,0	22,2	85-6	600
76	104,0	22,2	98-6	720
101	130,0	22,2	123-6	920