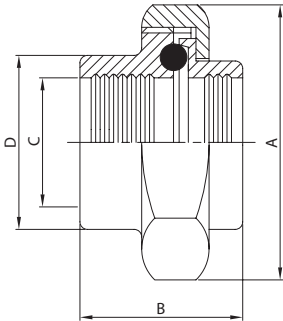
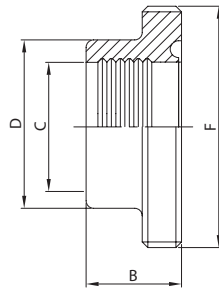
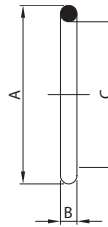


EG. UNION
100 B


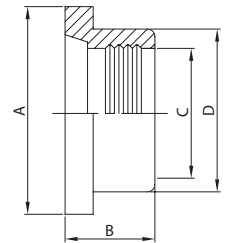
DN	A	B	C	D	gr
25	51,0	41,0	25,4	32,5	285
38	65,0	49,0	38,1	45,2	450
51	80,0	57,0	50,8	58,0	645
63	92,0	65,0	63,5	70,6	940
76	104,0	65,0	76,2	83,3	1.075
101	130,0	65,0	101,6	109,0	1.440

EG. MALE PART
101 B


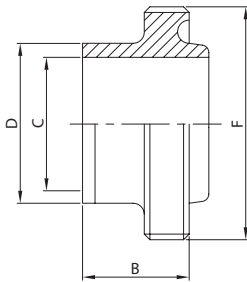
DN	B	C	D	F	gr
25	20,0	25,4	32,5	46-8	100
38	24,0	38,1	45,2	58-8	155
51	28,0	50,8	58,0	73-6	235
63	32,0	63,5	70,6	85-6	290
76	32,0	76,2	83,3	98-6	365
101	32,0	101,6	109,0	123-6	530

**O-RING
SEAL RING FOR UNION**
131 B


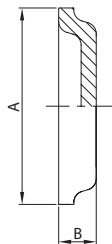
DN	A	B	C
25	39,9	6,6	26,7
38	52,6	6,6	39,4
51	65,3	6,6	52,1
63	78,0	6,6	64,8
76	90,6	6,6	77,4
101	116,1	6,6	102,9

**LINER
EG. LINER**
111 B


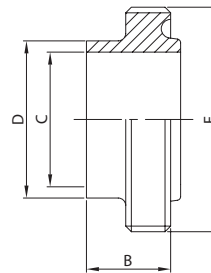
DN	A	B	C	D	gr
25	41,2	20,0	25,4	32,5	60
38	53,9	24,0	38,1	45,2	95
51	66,7	28,0	50,8	58,0	140
63	79,4	32,0	63,5	70,6	200
76	92,0	32,0	76,2	83,3	240
101	117,0	32,0	101,6	109,0	360

WG. MALE PART
102 B


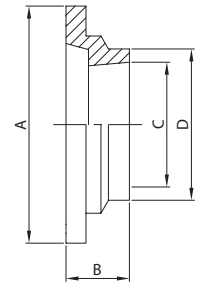
DN	B	C	D	F	gr
25	31,7	22,1	25,4	46-8	115
38	31,7	34,8	38,1	58-8	160
51	31,7	47,5	50,8	73-6	240
63	31,7	60,2	63,5	85-6	280
76	31,7	72,9	76,2	98-6	350
101	31,7	97,6	101,6	123-6	540

**LINER
BLANK PRESSED LINER**
118 B


DN	A	B	gr
25	41,2	7,5	25
38	53,9	7,5	40
51	66,7	7,5	60
63	79,4	8,7	90
76	92,0	8,7	115
101	117,0	8,7	225

WG. SHORT MALE PART
103 B


DN	B	C	D	F	gr
25	23,7	22,1	25,4	46-8	115
38	23,7	34,8	38,1	58-8	165
51	23,7	47,5	50,8	73-6	220
63	23,7	60,2	63,5	85-6	295
76	23,7	72,9	76,2	98-6	355
101	23,7	97,6	101,6	123-6	500

**LINER
WG. SHORT LINER**
113 B


DN	A	B	C	D	gr
25	41,2	12,0	22,1	25,4	35
38	53,9	12,0	34,8	38,1	50
51	66,7	12,0	47,5	50,8	60
63	79,4	12,0	60,2	63,5	75
76	92,0	12,0	72,9	76,2	100
101	117,0	12,0	97,6	101,6	155