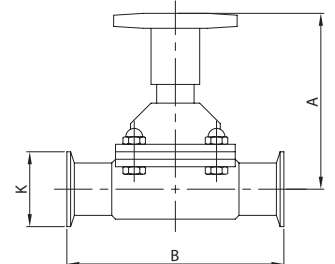
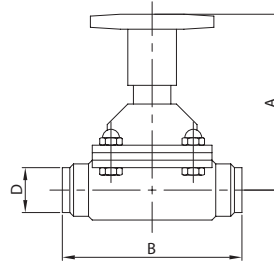
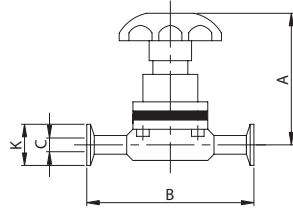
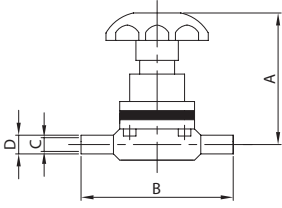
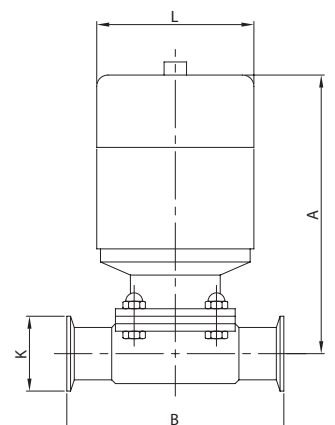
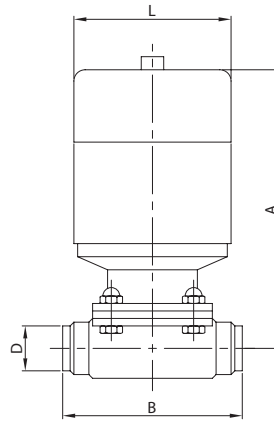
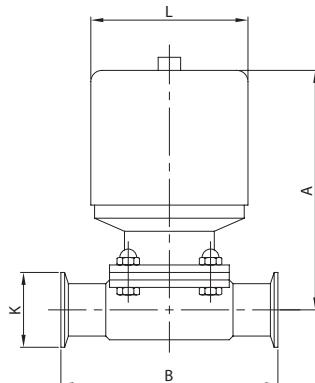
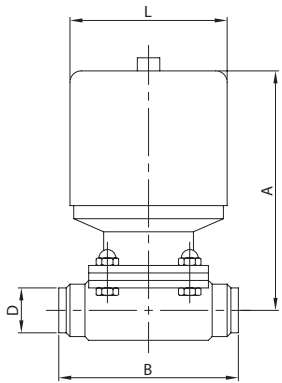

**D. MICROVALVE PE.**
**D. MICROVALVE E. FR.**
**DIAPHRAGM V. PE.**
**DIAPHRAGM V. E. FR.**
**S57W**
**S57K**
**57W**
**57K**


DN	A	B	C	D	gr
1/4" 6	66,5	67,0	3,9	6,3	190
3/8" 9	66,5	67,0	7,1	9,5	190
1/2" 12	66,5	67,0	9,4	12,7	190

DN	A	B	C	K	gr
1/2" 12	66,5	67,0	9,4	25,0	200

DN	A	B	D	gr
1/2" 12	78,0	89,0	12,7	840
3/4" 19	79,0	102,0	19,0	1.200
1" 25	92,0	114,0	25,4	1.680
1 1/2" 38	112,0	140,0	38,1	3.140
2" 51	135,0	159,0	50,8	5.040

DN	A	B	K	gr
1/2" 12	78,0	89,0	25,0	840
3/4" 19	79,0	102,0	25,0	1.200
1" 25	92,0	114,0	50,5	1.680
1 1/2" 38	112,0	140,0	50,5	3.140
2" 51	135,0	159,0	64,0	5.040

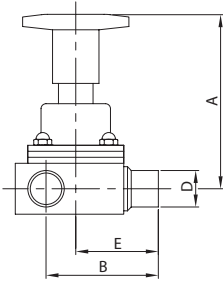
**PNEUMATIC D. V. PE.**
**PNEUMATIC D. V. E. FR.**
**D. V. CONTROL UNIT PE.**
**D. V. CONTROL UNIT E. FR.**
**58W**
**58K**
**60W**
**60K**


DN	A	B	D	L	gr
1/2" 12	110,0	89,0	12,7	60,0	1.360
3/4" 19	123,0	102,0	19,0	90,0	2.460
1" 25	129,0	114,0	25,4	90,0	2.780
1 1/2" 38	187,0	140,0	38,1	127,0	6.880
2" 51	198,0	159,0	50,8	127,0	8.160

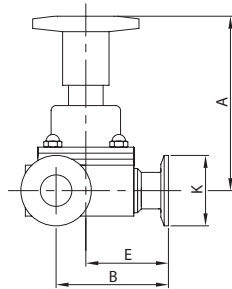
DN	A	B	K	L	gr
1/2" 12	111,0	89,0	25,0	60,0	1.360
3/4" 19	123,0	102,0	25,0	90,0	2.460
1" 25	129,0	114,0	50,5	90,0	2.780
1 1/2" 38	187,0	140,0	50,5	127,0	6.880
2" 51	198,0	159,0	64,0	127,0	8.160

DN	A	B	D	L	gr
1/2" 12	153,0	89,0	12,7	60,0	1.660
3/4" 19	154,0	102,0	19,0	90,0	3.010
1" 25	167,0	114,0	25,4	90,0	3.330
1 1/2" 38	187,0	140,0	38,1	127,0	7.880
2" 51	210,0	159,0	50,8	127,0	9.160

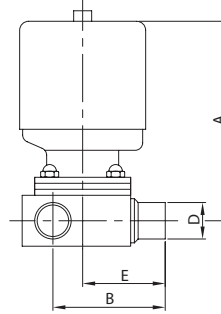
DN	A	B	K	L	gr
1/2" 12	153,0	89,0	25,0	60,0	1.660
3/4" 19	154,0	102,0	25,0	90,0	3.010
1" 25	167,0	114,0	50,5	90,0	3.330
1 1/2" 38	187,0	140,0	50,5	127,0	7.880
2" 51	210,0	159,0	64,0	127,0	9.160


**DIAPHRAGM V. 3 W. T PE.**
**ZDT 57W**


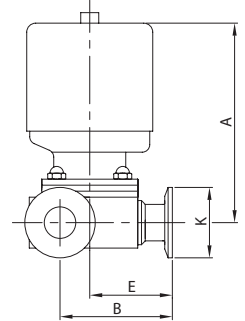
DN	A	B	D	E	gr
1/2" 12	97,5	56,5	12,7	44,5	840
3/4" 19	99,0	66,5	19,0	51,0	1.200
1" 25	120,0	80,0	25,4	57,0	1.680
1 1/2" 38	156,0	101,5	38,1	70,0	3.140
2" 51	182,0	118,5	50,8	79,5	5.040

**DIAPHR. V. 3 W. T FR.**
**ZDT 57K**


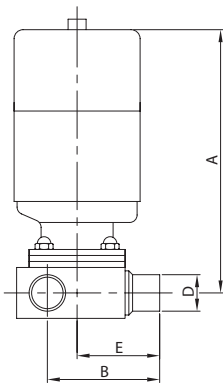
DN	A	B	E	K	gr
1/2" 12	97,5	56,5	44,5	25,0	840
3/4" 19	99,0	66,5	51,0	25,0	1.200
1" 25	120,0	80,0	57,0	50,5	1.680
1 1/2" 38	156,0	101,5	70,0	50,5	3.140
2" 51	182,0	118,5	79,5	64,0	5.040

**PNEUM. D. V. 3 W. T PE.**
**ZDT 58W**


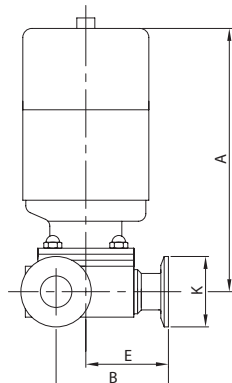
DN	A	B	D	E	gr
1/2" 12	110,0	56,5	12,7	44,5	1.360
3/4" 19	123,0	66,5	19,0	51,0	2.460
1" 25	129,0	80,0	25,4	57,0	2.780
1 1/2" 38	188,0	101,5	38,1	70,0	6.880
2" 51	201,0	118,5	50,8	79,5	8.160

**PN. D. V. 3 W. T E. FR.**
**ZDT 58K**


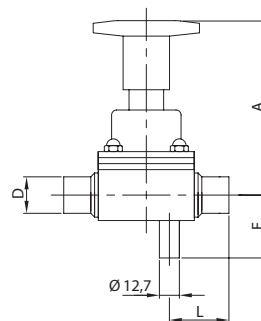
DN	A	B	E	K	gr
1/2" 12	110,0	56,5	44,5	25,0	1.360
3/4" 19	123,0	66,5	51,0	25,0	2.460
1" 25	129,0	80,0	57,0	50,0	2.780
1 1/2" 38	188,0	101,5	70,0	50,5	6.880
2" 51	201,0	118,5	79,5	64,0	8.160

**D. V. C. UNIT 3 W. T PE.**
**ZDT 60W**


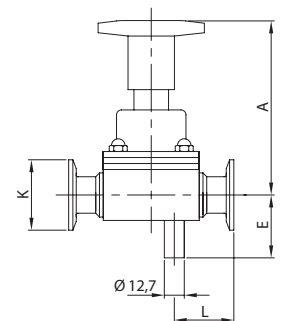
DN	A	B	D	E	gr
1/2" 12	186,0	56,5	12,7	44,5	1.660
3/4" 19	198,0	66,5	19,0	51,0	3.010
1" 25	204,0	80,0	25,4	57,0	3.330
1 1/2" 38	263,0	101,5	38,1	70,0	7.880
2" 51	276,0	118,5	50,8	79,5	9.160

**D. V. C. UN. 3 W. T E. FR.**
**ZDT 60K**


DN	A	B	E	K	gr
1/2" 12	186,0	56,5	44,5	25,0	1.660
3/4" 19	198,0	66,5	51,0	25,0	3.010
1" 25	204,0	80,0	57,0	50,5	3.330
1 1/2" 38	263,0	101,5	70,0	50,5	7.880
2" 51	276,0	118,5	79,5	64,0	9.160

**SAMPLING D. V. PE.**
**ZDL 57W**


DN	A	D	E	L	gr
1/2" 12	94,5	12,7	34,5	27,0	840
3/4" 19	96,0	19,0	39,0	32,0	1.200
1" 25	116,0	25,4	42,0	37,0	1.680
1 1/2" 38	155,0	38,1	59,0	42,0	3.140
2" 51	182,0	50,8	66,0	46,0	5.040

**SAMPLING D. V. E. FR.**
**ZDL 57K**


DN	A	E	K	L	gr
1/2" 12	94,5	34,5	25,0	27,0	840
3/4" 19	96,0	39,0	25,0	32,0	1.200
1" 25	116,0	42,0	50,5	37,0	1.680
1 1/2" 38	155,0	59,0	50,5	42,0	3.140
2" 51	182,0	66,0	64,0	46,0	5.040



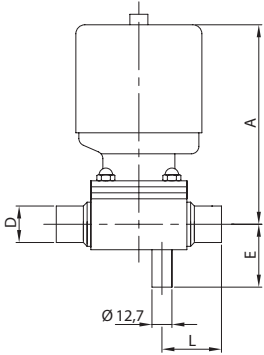
SAMPLING PN. D. V. PE.

SAMPL. PN. D. V. E. FR.

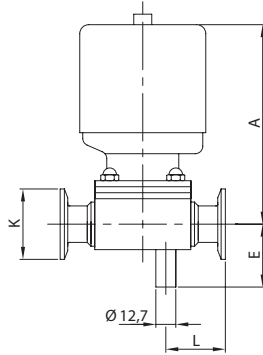
SAMPLING D. V. C. UN. PE.

SAMPL. D. V. C. UN. E. FR.

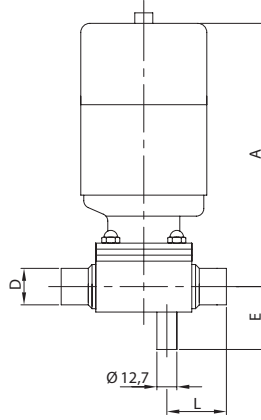
ZDL 58W



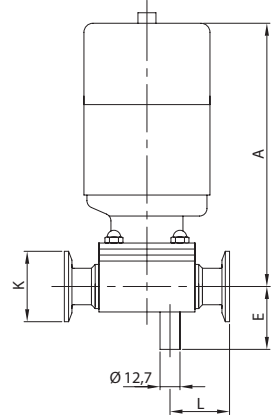
ZDL 58K



ZDL 60W



ZDL 60K



DN	A	D	E	L	gr
1/2" 12	107,0	12,7	34,5	27,0	1.360
3/4" 19	120,0	19,0	39,0	32,0	2.460
1" 25	125,0	25,4	42,0	37,0	2.780
1 1/2" 38	187,0	38,1	59,0	42,0	6.880
2" 51	201,0	50,8	66,0	46,0	8.160

DN	A	E	K	L	gr
1/2" 12	107,0	34,5	25,0	27,0	1.360
3/4" 19	120,0	39,0	25,0	32,0	2.460
1" 25	125,0	42,0	50,5	37,0	2.780
1 1/2" 38	187,0	59,0	50,5	42,0	6.880
2" 51	201,0	66,0	64,0	46,0	8.160

DN	A	D	E	L	gr
1/2" 12	183,0	12,7	34,5	27,0	1.660
3/4" 19	195,0	19,0	39,0	32,0	3.010
1" 25	200,0	25,4	42,0	37,0	3.330
1 1/2" 38	262,0	38,1	59,0	42,0	7.880
2" 51	276,0	50,8	66,0	46,0	9.160

DN	A	E	K	L	gr
1/2" 12	183,0	34,5	25,0	27,0	1.660
3/4" 19	195,0	39,0	25,0	32,0	3.010
1" 25	200,0	42,0	50,5	37,0	3.330
1 1/2" 38	262,0	59,0	50,5	42,0	7.880
2" 51	276,0	66,0	64,0	46,0	9.160

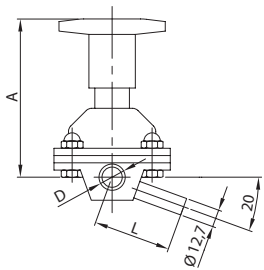
20° SAMPLING D. V. PE. . 20°

20° SAMPLING D. V. E. FR. . 20°

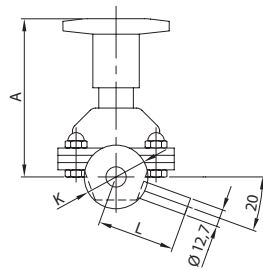
20° SAMPL. PN. D. V. PE. . 20°

20° SAMPL. PN. D. V. E. FR. . 20°

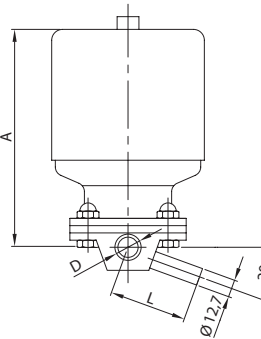
D2L 57W



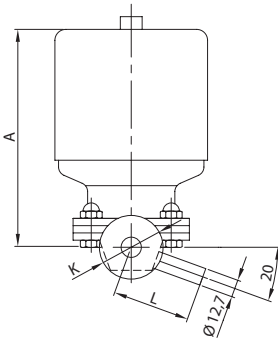
D2L 57K



D2L 58W



D2L 58K



DN	A	D	L	gr
1/2" 12	94,5	12,7	46,0	840
3/4" 19	96,0	19,0	50,0	1.200
1" 25	116,0	25,4	55,0	1.680
1 1/2" 38	155,0	38,1	71,0	3.140
2" 51	182,0	50,8	84,0	5.040

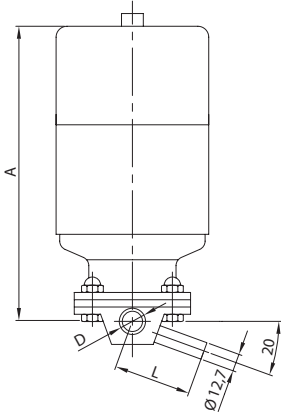
DN	A	K	L	gr
1/2" 12	94,5	25,0	46,0	840
3/4" 19	96,0	25,0	50,0	1.200
1" 25	116,0	50,5	55,0	1.680
1 1/2" 38	155,0	50,5	71,0	3.140
2" 51	182,0	64,0	84,0	5.040

DN	A	D	L	gr
1/2" 12	107,0	12,7	46,0	1.360
3/4" 19	120,0	19,0	50,0	2.460
1" 25	125,0	25,4	55,0	2.780
1 1/2" 38	187,0	38,1	71,0	6.880
2" 51	201,0	50,8	84,0	8.160

DN	A	K	L	gr
1/2" 12	107,0	25,0	46,0	1.360
3/4" 19	120,0	25,0	50,0	2.460
1" 25	125,0	50,5	55,0	2.780
1 1/2" 38	187,0	50,5	71,0	6.880
2" 51	201,0	64,0	84,0	8.160

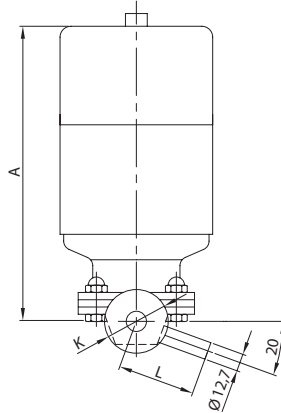


20° SAMPL. D. V. C. UN. PE.

**D2L 60W**


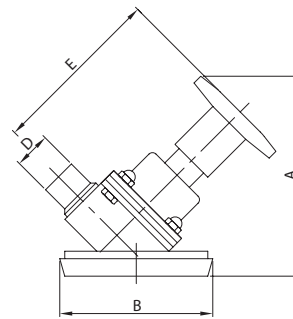
DN	A	D	L	gr
1/2" 12	183,0	12,7	46,0	1.660
3/4" 19	195,0	19,0	50,0	3.010
1" 25	200,0	25,4	55,0	3.330
1 1/2" 38	262,0	38,1	71,0	7.880
2" 51	276,0	50,8	84,0	9.160

20° SAMPL. D. V. C. UN. E. FR.

**D2L 60K**


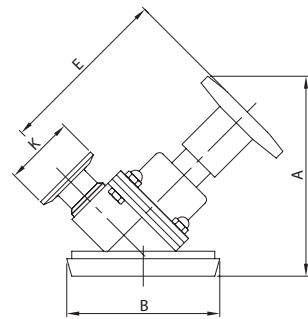
DN	A	K	L	gr
1/2" 12	183,0	25,0	46,0	1.660
3/4" 19	195,0	25,0	50,0	3.010
1" 25	200,0	50,5	55,0	3.330
1 1/2" 38	262,0	50,5	71,0	7.880
2" 51	276,0	64,0	84,0	9.160

TANK BOTTOM D. V. PE.

**KTB 57W**


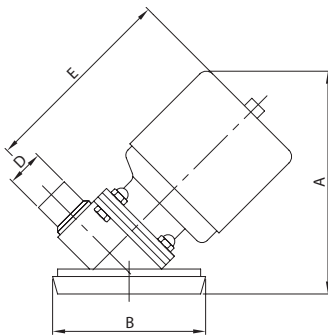
DN	A	B	D	E	gr
1/2" 12	117,0	68,0	12,7	94,5	1.040
3/4" 19	123,0	86,0	19,0	96,0	1.550
1" 25	142,0	100,0	25,4	116,0	2.030
1 1/2" 38	181,0	121,0	38,1	155,0	4.090
2" 51	206,0	150,0	50,8	182,0	7.090

TANK BOTTOM D. V. E. FR.

**KTB 57K**


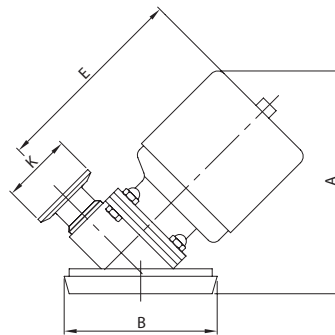
DN	A	B	E	K	gr
1/2" 12	117,0	68,0	94,5	25,0	1.040
3/4" 19	123,0	86,0	96,0	25,0	1.550
1" 25	142,0	100,0	116,0	50,5	2.030
1 1/2" 38	181,0	121,0	155,0	50,5	4.090
2" 51	206,0	150,0	182,0	64,0	7.090

TANK B. PNEUM. D. V. PE.

**KTB 58W**


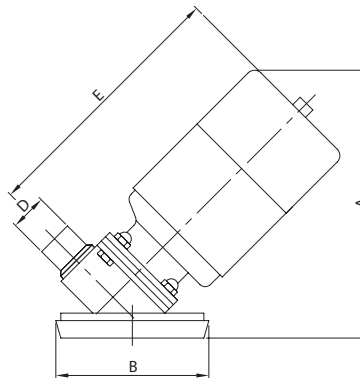
DN	A	B	D	E	gr
1/2" 12	125,0	68,0	12,7	107,0	1.560
3/4" 19	147,0	86,0	19,0	120,0	2.810
1" 25	152,0	100,0	25,4	125,0	3.130
1 1/2" 38	210,0	121,0	38,1	187,0	7.830
2" 51	227,0	150,0	50,8	201,0	10.210

TANK B. PNEUM. D. V. E. FR.

**KTB 58K**


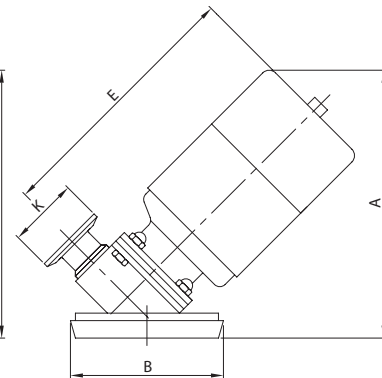
DN	A	B	E	K	gr
1/2" 12	125,0	68,0	107,0	25,0	1.560
3/4" 19	147,0	86,0	120,0	25,0	2.810
1" 25	152,0	100,0	125,0	50,5	3.130
1 1/2" 38	210,0	121,0	187,0	50,5	7.830
2" 51	227,0	150,0	201,0	64,0	10.210

TANK B. D. V. C. UN. PE.

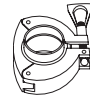
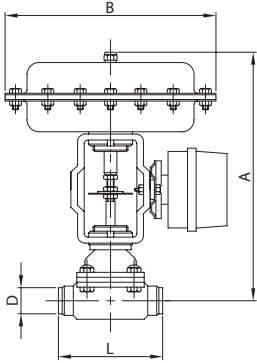
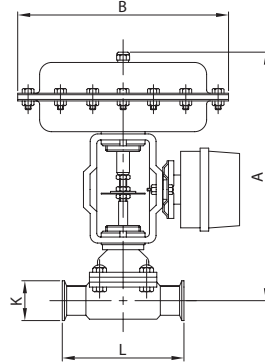
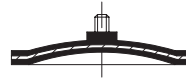
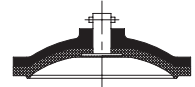
**KTB 60W**


DN	A	B	D	E	gr
1/2" 12	187,0	68,0	12,7	183,0	1.860
3/4" 19	201,0	86,0	19,0	195,0	3.360
1" 25	204,0	100,0	25,4	200,0	3.680
1 1/2" 38	262,0	121,0	38,1	262,0	8.830
2" 51	274,0	150,0	50,8	276,0	11.210

TANK B. D. V. C. UN. E. FR.

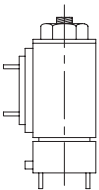
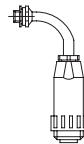
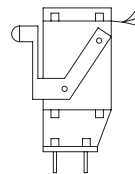
**KTB 60K**


DN	A	B	E	K	gr
1/2" 12	187,0	68,0	183,0	25,0	1.860
3/4" 19	201,0	86,0	195,0	25,0	3.360
1" 25	204,0	100,0	200,0	50,5	3.680
1 1/2" 38	262,0	121,0	262,0	50,5	8.830
2" 51	274,0	150,0	276,0	64,0	11.210


**MODULATING D. V. PE.**
**MODULATING D. V. E. FR.**
**EPDM  
EPDM DIAPHRAGM**
**PTFE DIAPHRAGM**
**59W**

**59K**

**57 E 08**

**57 T 08**


DN	A	B	D	L	gr
1/2" 12	305,5	290,0	12,7	89,0	11.840
3/4" 19	307,0	290,0	19,0	102,0	12.200
1" 25	311,0	290,0	25,4	114,0	12.680
1 1/2" 38	330,5	290,0	38,1	140,0	14.140
2" 51	345,5	290,0	50,8	159,0	16.040

DN	A	B	K	L	gr
1/2" 12	305,5	290,0	25,0	89,0	11.840
3/4" 19	307,0	290,0	25,0	102,0	12.200
1" 25	311,0	290,0	50,5	114,0	12.680
1 1/2" 38	330,5	290,0	50,5	140,0	14.140
2" 51	345,5	290,0	64,0	159,0	16.040

**NC  
SOLENOID VALVE NC.**
**CONNECTOR**
**MICROSWITCH**
**PROXIMITY CONTACT**
**015 NC**

**030 S**

**014 1**
**014 2**

**013 A**
**013 A/N**
**013 A/N/EX**
