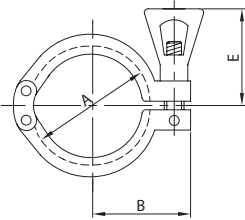


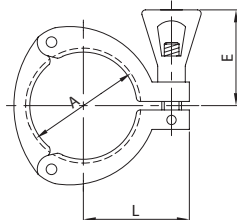


**2**  
HEAVY DUTY CLAMP  
COLLIER CLAMP  
ABRAZADERA

**K12**


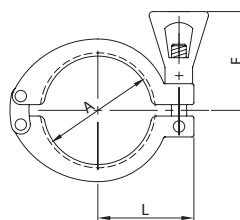
DN	A	E	L	gr
1/2" 12	27,0	35,0	27,0	120
3/4" 19	27,0	35,0	27,0	120
1" 25	53,4	53,0	43,0	220
1 1/2" 38	53,4	53,0	43,0	220
2" 51	67,0	53,0	50,0	260
2 1/2" 63	80,4	53,0	56,5	330
3" 76	94,0	53,0	65,0	400
4" 101	122,0	53,0	85,0	500

**3**  
HEAVY DUTY CLAMP 3 PCS.  
COLLIER CLAMP 3 PIECES  
ABRAZADERA

**K13**


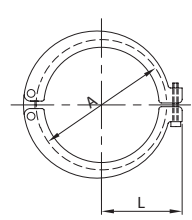
DN	A	E	L	gr
1" 25	53,4	53,0	45,0	270
1 1/2" 38	53,4	53,0	45,0	270
2" 51	67,0	53,0	51,5	330
2 1/2" 63	80,4	53,0	58,2	395
3" 76	94,0	53,0	65,0	425
4" 101	122,0	53,0	81,0	540

**2**  
HEAVY DUTY CLAMP  
COLLIER CLAMP  
ABRAZADERA

**K15**


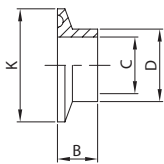
DN	A	E	L	gr
1/2" 25	54,5	53,0	43,7	220
1 1/2" 38	54,5	53,0	43,7	220
2" 51	68,0	53,0	50,5	260
2 1/2" 63	81,5	53,0	57,2	330
3" 76	95,0	53,0	64,0	400
4" 101	123,0	53,0	78,0	500

**2**  
HEAVY DUTY CLAMP  
COLLIER CLAMP  
ABRAZADERA

**K12 HP**


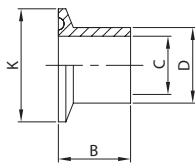
DN	A	L	gr
5" 127	148,0	95,0	750
6" 152	170,0	111,0	1.450
8" 203	222,0	137,0	1.750

SHORT WG. FERRULE  
FERRULE SR. COURTE  
ENLACE CORTO SR.

**K14 S**


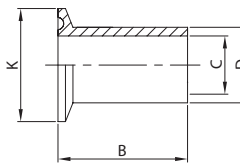
DN	B	C	D	K	gr
1/2" 12	12,7	9,4	12,7	25,0	16
3/4" 19	12,7	15,7	19,0	25,0	14
1" 25	12,7	22,1	25,4	50,5	60
1 1/2" 38	12,7	34,8	38,1	50,5	40
2" 51	12,7	47,5	50,8	64,0	60
2 1/2" 63	12,7	60,2	63,5	77,5	75
3" 76	12,7	72,9	76,2	91,0	95
4" 101	15,8	97,4	101,6	119,0	180
4" 104	15,8	100,0	104,0	119,0	180

WG. FERRULE  
FERRULE SR.  
ENLACE SR.

**K14 W**


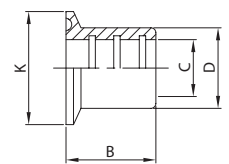
DN	B	C	D	K	gr
1/2" 12	21,0	9,4	12,7	25,0	19
3/4" 19	21,0	15,7	19,0	25,0	20
1" 25	28,6	22,1	25,4	50,5	80
1 1/2" 38	28,6	34,8	38,1	50,5	60
2" 51	28,6	47,5	50,8	64,0	95
2 1/2" 63	28,6	60,2	63,5	77,5	115
3" 76	28,6	72,9	76,2	91,0	150
4" 101	28,6	97,4	101,6	119,0	250
4" 104	28,6	100,0	104,0	119,0	250
5" 127	28,6	122,0	127,0	144,4	320
6" 152	28,6	147,4	152,4	166,0	400
8" 203	28,6	198,2	203,2	217,0	500

LONG WG. FERRULE  
FERRULE SR. LONGUE  
ENLACE SR.

**K14 WL**


DN	B	C	D	K	gr
1" 25	76,2	22,1	25,4	50,5	120
1 1/2" 38	76,2	34,8	38,1	50,5	130
2" 51	76,2	47,5	50,8	64,0	180
2 1/2" 63	76,2	60,2	63,5	77,5	280
3" 76	101,6	72,9	76,2	91,0	380
4" 101	101,6	97,4	101,6	119,0	560
4" 104	101,6	100,0	104,0	119,0	560

ROLL-ON FERRULE  
FERRULE DR.  
ENLACE MR.

**K14 R**


DN	B	C	D	K	gr
1" 25	19,0	25,4	29,6	50,5	60
1 1/2" 38	28,6	38,1	42,6	50,5	65
2" 51	33,4	50,8	55,8	64,0	105
2 1/2" 63	35,0	63,5	68,8	77,5	145
3" 76	36,5	76,2	82,0	91,0	190
4" 101	38,0	101,6	110,0	119,0	300