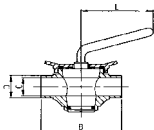




ΚΡΟΥΝΟΣ ΔΙΟΔΟΣ ΣΥΓΚΟΛΛΗΣΗΣ
 PLUG COCK 2 WAYS PE.
 ROBINET 2 VOIES BL.
 GRIFO 2 VIAS EL.

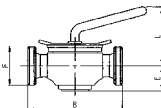
500 L



DN	B	C	D	L	gr
25	125,0	22,4	25,4	100,0	1.950
38	160,0	35,1	38,1	115,0	4.250
51	170,0	47,8	50,8	140,0	6.050
63	200,0	60,5	63,5	160,0	12.600
76	230,0	72,9	76,2	160,0	16.150

ΚΡΟΥΝΟΣ ΔΙΟΔΟΣ ΑΚΡΑ ΑΡΙΣΤ.
 PLUG COCK 2 WAYS ME.
 ROBINET 2 VOIES BF.
 GRIFO 2 VIAS ER.

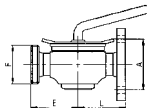
501 S



DN	B	E	F	L	gr
25	125,0	38,0	40-6	90,0	1.950
38	160,0	45,0	60-6	117,0	4.250
51	170,0	55,0	70-6	122,0	6.450
63	200,0	68,0	85-6	142,0	13.650
76	230,0	71,0	98-6	154,0	18.400

ΚΡΟΥΝΟΣ ΔΙΟΔΟΣ ΦΛΑΝΤΖΑ-ΣΠΕΙΡ.
 PLUG C. 2 WAYS ME./FLANGE
 ROBINET 2 VOIES BF./BRIDE
 GRIFO 2 VIAS ER./BRIDA

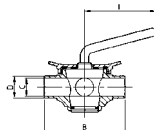
504 S



DN	A	E	F	L	gr
25	75,0	62,5	40-6	72,0	2.600
38	90,0	80,0	60-6	89,5	5.450
51	110,0	85,0	70-6	94,5	7.300
63	130,0	100,0	85-6	109,5	15.000
76	150,0	115,0	98-6	124,5	18.800

ΚΡΟΥΝΟΣ ΤΡΙΟΔΟΣ ΣΥΓΚΟΛΛΗΣΗΣ
 PLUG COCK 3 WAYS PE.
 ROBINET 3 VOIES BL.
 GRIFO 3 VIAS EL.

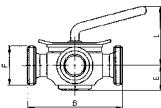
510 L



DN	B	C	D	L	gr
25	125,0	22,4	25,4	100,0	2.050
38	160,0	35,1	38,1	115,0	4.450
51	170,0	47,8	50,8	140,0	6.100
63	200,0	60,5	63,5	160,0	12.350
76	230,0	72,9	76,2	160,0	17.000

ΚΡΟΥΝΟΣ ΤΡΙΟΔΟΣ ΑΚΡΑ ΑΡΙΣΤ.
 PLUG COCK 3 WAYS ME.
 ROBINET 3 VOIES BF.
 GRIFO 3 VIAS ER.

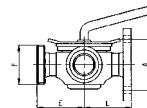
511 S



DN	B	E	F	L	gr
25	125,0	38,0	40-6	90,0	2.150
38	160,0	45,0	60-6	117,0	3.850
51	170,0	55,0	70-6	122,0	6.750
63	200,0	68,0	85-6	142,0	12.800
76	230,0	71,0	98-6	154,0	16.550

ΚΡΟΥΝΟΣ ΤΡΙΟΔΟΣ ΦΛΑΝΤΖΑ-ΣΠΕΙΡ.
 PLUG C. 3 WAYS ME./ME./FL.
 ROB. 3 VOIES BF./BF./BR.
 GRIFO 3 VIAS ER./ER./BR.

514 S



DN	A	E	F	L	gr
25	75,0	62,5	40-6	72,0	2.050
38	90,0	80,0	60-6	89,5	6.000
51	110,0	85,0	70-6	94,5	7.800
63	130,0	100,0	85-6	109,5	15.300
76	150,0	115,0	98-6	124,5	19.600