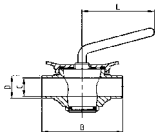


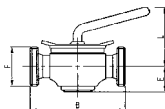


ΚΡΟΥΝΟΣ ΔΙΟΔΟΣ ΣΥΓΚΟΛΛΗΣΗΣ  
 PLUG COCK 2 WAYS PE.  
 ROBINET 2 VOIES BL.  
 GRIFO 2 VÍAS EL.

**500 L**


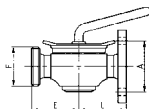
DN	B	C	D	L	gr
28	125,0	25,0	28,0	100,0	1.950
34	160,0	31,0	34,0	115,0	3.050
40	160,0	37,0	40,0	115,0	4.250
52	170,0	49,0	52,0	140,0	6.050
70	200,0	66,0	70,0	140,0	12.600
85	230,0	81,0	85,0	160,0	16.100

ΚΡΟΥΝΟΣ ΔΙΟΔΟΣ ΑΚΡΑ ΑΡΣΕΝ.  
 PLUG COCK 2 WAYS ME.  
 ROBINET 2 VOIES BF.  
 GRIFO 2 VÍAS ER.

**501 D**


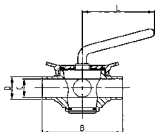
DN	B	E	F	L	gr
25	125,0	38,0	52-6	90,0	2.100
32	160,0	45,0	58-6	117,0	3.400
40	160,0	45,0	65-6	117,0	4.700
50	170,0	55,0	78-6	122,0	6.600
65	200,0	68,0	95-6	142,0	13.350
80	230,0	71,0	110-4	154,0	17.350

ΚΡΟΥΝΟΣ ΔΙΟΔΟΣ ΦΛΑΝΤΖΑ-ΣΠΕΙΡ.  
 PLUG C. 2 WAYS ME./FLANGE  
 ROBINET 2 VOIES BF./BRIDE  
 GRIFO 2 VÍAS ER./BRIDA

**504 D**


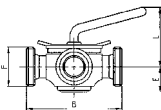
DN	A	E	F	L	gr
25	75,0	62,5	52-6	72,0	2.600
32	90,0	80,0	58-6	89,5	4.150
40	100,0	80,0	65-6	89,5	5.500
50	110,0	85,0	78-6	94,5	7.400
65	130,0	100,0	95-6	109,5	14.300
80	150,0	115,0	110-4	124,5	18.800

ΚΡΟΥΝΟΣ ΤΡΙΟΔΟΣ ΣΥΓΚΟΛΛΗΣΗΣ  
 PLUG COCK 3 WAYS PE.  
 ROBINET 3 VOIES BL.  
 GRIFO 3 VÍAS EL.

**510 L**


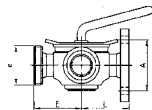
DN	B	C	D	L	gr
28	125,0	25,0	28,0	100,0	2.050
34	160,0	31,0	34,0	115,0	4.500
40	160,0	37,0	40,0	115,0	4.500
52	170,0	49,0	52,0	140,0	6.100
70	200,0	66,0	70,0	160,0	12.400
85	230,0	81,0	85,0	160,0	17.100

ΚΡΟΥΝΟΣ ΤΡΙΟΔΟΣ ΑΚΡΑ ΑΡΣΕΝ.  
 PLUG COCK 3 WAYS ME.  
 ROBINET 3 VOIES BF.  
 GRIFO 3 VÍAS ER.

**511 D**


DN	B	E	F	L	gr
25	125,0	38,0	52-6	90,0	2.150
32	160,0	45,0	58-6	117,0	5.000
40	160,0	45,0	65-6	117,0	5.000
50	170,0	55,0	78-6	122,0	6.750
65	200,0	68,0	95-6	142,0	13.350
80	230,0	71,0	110-4	154,0	17.600

ΚΡΟΥΝΟΣ ΤΡΙΟΔΟΣ ΦΛΑΝΤΖΑ-ΣΠΕΙΡ.  
 PLUG C. 3 WAYS ME./ME./FL.  
 ROBINET 3 VOIES BF./BF./BR.  
 GRIFO 3 VÍAS ER./ER./BR.

**514 D**


DN	A	E	F	L	gr
25	75,0	62,5	52-6	72,0	2.650
32	90,0	80,0	58-6	89,5	6.000
40	100,0	80,0	65-6	89,5	6.100
50	110,0	85,0	78-6	94,5	7.800
65	130,0	100,0	95-6	109,5	14.700
80	150,0	115,0	110-4	124,5	19.600