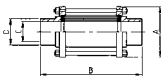




ΥΑΛΟΔΕΙΚΤΗΣ ΣΥΓΚΟΛ.
 SIGHT GLASS PE.
 REGARD BL.
 MIRILLA EL.

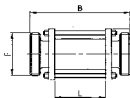
450 L



DN	A	B	C	D	gr
25	55,0	147,0	22,4	25,4	400
38	70,0	153,0	35,1	38,1	620
51	85,0	153,0	47,8	50,8	860
63	95,0	163,0	60,5	63,5	950
76	105,0	173,0	72,9	76,2	1.100
101	140,0	173,0	97,6	101,6	2.760

ΥΑΛΟΔΕΙΚΤΗΣ ΑΚΡΑ ΑΡΞΕΝ.
 SIGHT GLASS ME./ME.
 REGARD BF/BF.
 MIRILLA ER./ER.

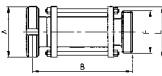
452 S



DN	A	B	F	L	gr
25	55,0	165,0	40-6	83,0	550
38	70,0	165,0	60-6	83,0	940
51	85,0	165,0	70-6	83,0	1.270
63	95,0	165,0	85-6	83,0	1.400
76	105,0	165,0	98-6	83,0	1.710
101	140,0	183,0	132-6	83,0	3.760

ΥΑΛΟΔΕΙΚΤΗΣ ΑΡΞΕΝ.-ΘΗΑ.
 SIGHT GLASS L. N./ME. ED.
 REGARD PL. E./BF. DN.
 MIRILLA C. T./ER. MD.

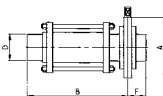
454 S



DN	A	B	F	L	gr
25	51,0	156,0	40-6	55,0	630
38	74,0	159,0	60-6	70,0	1.170
51	84,0	159,0	70-6	85,0	1.500
63	100,0	164,0	85-6	95,0	1.840
76	114,0	169,0	98-6	105,0	2.360
101	150,0	178,0	132-6	140,0	4.980

ΥΑΛΟΔΕΙΚΤΗΣ ΜΕ ΒΑΝΝΑ
 SIGHT GLASS PE. + B. V. PE.
 REGARD BL. + V. P. BL.
 MIRILLA EL. + V. M. EL.

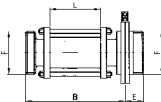
460 L



DN	A	B	D	E	gr
25	79,0	153,0	25,4	34,0	760
38	85,0	156,0	38,1	38,0	1.020
51	105,0	156,0	50,8	40,0	1.500
63	112,0	162,0	63,5	40,0	1.880
76	125,0	167,0	76,2	41,0	1.980
101	157,0	167,0	101,6	44,0	4.180

ΥΑΛΟΔΕΙΚΤΗΣ ΜΕ ΒΑΝΝΑ
 SIGHT GLASS ME. + B. V. ME.
 REGARD BF. + V. P. BF.
 MIRILLA ER. + V. M. ER.

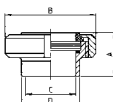
462 S



DN	B	E	F	L	gr
25	162,0	34,0	40-6	83,0	990
38	162,0	38,0	60-6	83,0	1.620
51	162,0	40,0	70-6	83,0	2.120
63	163,0	40,0	85-6	83,0	2.450
76	163,0	41,0	98-6	83,0	3.090
101	172,0	44,0	132-6	83,0	5.730

ΥΑΛΟΔΕΙΚΤΗΣ ΔΕΞΑΜΕΝΩΝ
 SIGHT GLASS WE.
 INDIC. DE CIRC. PLAT BS.
 MIRILLA PLANA ES.

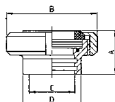
441 S



DN	A	B	C	D	gr
25	29,0	51,0	22,4	25,4	220
38	33,0	74,0	35,1	38,1	900
51	36,0	84,0	47,8	50,8	540
63	41,0	100,0	60,5	63,5	990
76	48,0	114,0	72,9	76,2	1.250
101	40,0	150,0	97,6	101,6	2.030

ΥΑΛΟΔΕΙΚΤΗΣ ΔΕΞΑΜΕΝΩΝ
 SIGHT GLASS EE.
 INDIC. DE CIRC. PLAT BD.
 MIRILLA PLANA EM.

442 S



DN	A	B	C	D	gr
25	29,0	51,0	25,4	32,0	220
38	33,0	74,0	38,1	48,0	900
51	36,0	84,0	50,8	61,0	540
63	41,0	100,0	63,5	73,5	990
76	48,0	114,0	76,2	86,0	1.250
101	40,0	154,0	101,6	116,0	2.030