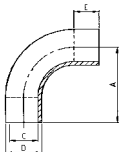


ΚΑΜΠΥΛΗ 90° ΜΑΚΡΥΑ  
 BEND 90° EE.  
 COUDE 90° BD.  
 CURVA 90° EM.

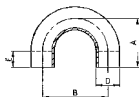
350 D



DN	A	C	D	E	gr
10	38,0	10,0	12,0	12,0	30
15	47,0	16,0	18,0	12,0	55
20	52,0	20,0	22,0	12,0	60
25	70,0	25,0	28,0	20,0	110
32	78,0	31,0	34,0	23,0	100
40	85,0	37,0	40,0	25,0	215
50	97,0	49,0	52,0	27,0	300
65	110,0	66,0	70,0	30,0	570
80	123,0	81,0	85,0	33,0	780
100	140,0	97,0	101,0	40,0	1.200
104	140,0	100,0	104,0	40,0	1.200

ΚΑΜΠΥΛΗ 180°  
 BEND 180° PE.  
 COUDE 180° BL.  
 CURVA 180° EL.

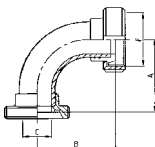
390 L



DN	A	B	D	E	gr
12	38,0	52,0	12,0	12,0	60
18	47,0	70,0	18,0	12,0	110
22	52,0	80,0	22,0	12,0	120
28	70,0	100,0	28,0	20,0	185
34	78,0	110,0	34,0	23,0	240
40	85,0	120,0	40,0	25,0	350
52	97,0	140,0	52,0	27,0	410
70	110,0	160,0	70,0	30,0	970
85	123,0	180,0	85,0	33,0	1.500
101	140,0	220,0	101,0	40,0	2.400
104	140,0	220,0	104,0	40,0	2.400

ΚΑΜΠΥΛΗ 90° ΜΕ ΑΚΡΑ ΑΡΣ.-ΘΗΛ.  
 BEND 90° MP/TR. N. ED.  
 COUDE 90° PF/PC. E. DN.  
 CURVA 90° M./C. T. MD.

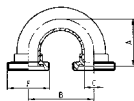
353 D



DN	A	B	C	F	gr
25	77,0	77,0	25,0	52-6	487
32	85,0	85,0	31,0	58-6	630
40	91,0	91,0	37,0	65-6	800
50	103,0	103,0	49,0	78-6	1.100
65	117,0	117,0	66,0	95-6	1.785
80	132,0	132,0	81,0	110-4	2.530
100	149,0	149,0	97,0	130-4	3.970
104	149,0	149,0	100,0	130-4	3.970

ΚΑΜΠΥΛΗ 180° ΜΕ ΑΚΡΑ ΑΡΣΕΝΙΚΑ  
 BEND 180° MP/MP. ED.  
 COUDE 180° PF/PF. DN.  
 CURVA 180° M./M. MD.

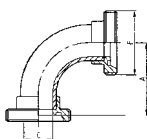
391 D



DN	A	B	C	F	gr
25	77,0	100,0	25,0	52-6	450
32	85,0	110,0	31,0	58-6	580
40	91,0	120,0	37,0	65-6	770
50	103,0	140,0	49,0	78-6	970
65	117,0	160,0	66,0	95-6	1.730
80	132,0	180,0	81,0	110-4	2.700
100	149,0	220,0	97,0	130-4	4.400
104	149,0	220,0	100,0	130-4	4.400

ΚΑΜΠΥΛΗ 90° ΜΕ ΑΚΡΑ ΑΡΣΕΝΙΚΑ  
 BEND 90° MP/MP. ED.  
 COUDE 90° PF/PF. DN.  
 CURVA 90° M./M. MD.

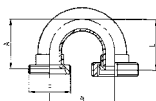
354 D



DN	A	C	F	gr
25	77,0	25,0	52-6	374
32	85,0	31,0	58-6	500
40	91,0	37,0	65-6	625
50	103,0	49,0	78-6	860
65	117,0	66,0	95-6	1.330
80	132,0	81,0	110-4	1.980
100	149,0	97,0	130-4	3.200
104	149,0	100,0	130-4	3.200

ΚΑΜΠΥΛΗ 180° ΜΕ ΑΚΡΑ ΑΡΣ.-ΘΗΛ.  
 BEND 180° MP/TR. N. ED.  
 COUDE 180° PF/PC. E. DN.  
 CURVA 180° M./C. T. MD.

393 D



DN	A	B	F	L	gr
25	77,0	100,0	52-6	77,0	562
32	85,0	110,0	58-6	85,0	710
40	91,0	120,0	65-6	91,0	995
50	103,0	140,0	78-6	103,0	1.210
65	117,0	160,0	95-6	117,0	2.185
80	132,0	180,0	110-4	132,0	3.250
100	149,0	220,0	130-4	149,0	5.170
104	149,0	220,0	130-4	149,0	5.170