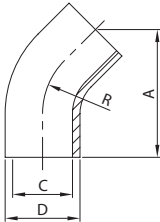




**45°
BEND 45° PE.**

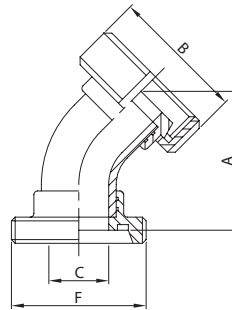
300 L



DN	A	C	D	R	gr
12	45,0	10,0	12,0	26,0	40
18	60,0	16,0	18,0	35,0	50
22	65,0	20,0	22,0	40,0	60
28	73,0	25,0	28,0	50,0	62
34	83,0	31,0	34,0	55,0	85
40	89,0	37,0	40,0	60,0	120
52	103,0	49,0	52,0	70,0	190
70	108,0	66,0	70,0	80,0	390
85	120,0	81,0	85,0	90,0	470
101	137,0	97,6	101,6	110,0	930
104	137,0	100,0	104,0	100,0	930

**45°
BEND 45° MP./TP. N. ED.
COUDE 45° PF./PC. E. DN.
CODO 45° M./C. T. MD.**

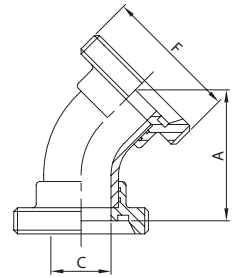
303 D



DN	A	B	C	F	gr
25	91,0	63,5	25,0	52-6	439
32	100,3	70,0	31,0	58-6	555
40	104,5	78,0	37,0	65-6	705
50	118,5	92,0	49,0	78-6	990
65	124,5	112,0	66,0	95-6	1.605
80	140,7	127,0	81,0	110-4	2.220
100	173,7	148,0	97,6	130-4	3.700
104	173,7	148,0	100,0	130-4	3.700

**45°
BEND 45° MP./MP ED.**

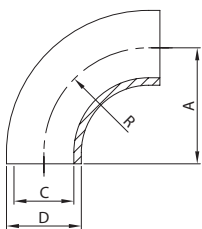
304 D



DN	A	C	F	gr
25	96,0	25,0	52-6	325
32	105,6	31,0	58-6	425
40	110,0	37,0	65-6	540
50	124,0	49,0	78-6	750
65	130,5	66,0	95-6	1.150
80	146,0	81,0	110-4	1.670
100	180,0	97,6	130-4	2.930
104	180,0	100,0	130-4	2.930

**90°
BEND 90° WE.**

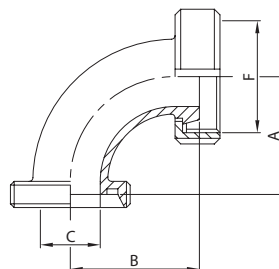
310 D



DN	A	C	D	R	gr
10	26,0	10,0	12,0	26,0	18
15	35,0	16,0	18,0	35,0	20
20	40,0	20,0	22,0	40,0	50
25	50,0	25,0	28,0	50,0	65
32	55,0	31,0	34,0	55,0	100
40	60,0	37,0	40,0	60,0	150
50	70,0	49,0	52,0	70,0	190
65	80,0	66,0	70,0	80,0	410
80	90,0	81,0	85,0	90,0	530
100	110,0	97,6	101,6	110,0	810
104	100,0	100,0	104,0	100,0	810
125	188,0	125,0	129,0	188,0	900

**90°
BEND 90° MP./TP. N. WD.**

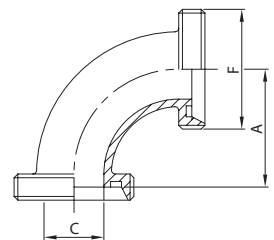
313 D



DN	A	B	C	F	gr
25	77,0	77,0	25,0	52-6	465
32	85,0	85,0	31,0	58-6	615
40	92,0	92,0	37,0	65-6	790
50	103,0	103,0	49,0	78-6	1.096
65	117,0	117,0	66,0	95-6	1.730
80	132,0	132,0	81,0	110-4	2.470
100	149,0	149,0	97,6	130-4	3.950
104	149,0	149,0	100,0	130-4	3.950

**90°
BEND 90° MP./MP WD.
COUDE 90° PF./PF. SD.
CODO 90° M./M. SD.**

314 D



DN	A	C	F	gr
25	77,0	25,0	52-6	345
32	85,0	31,0	58-6	460
40	92,0	37,0	65-6	630
50	103,0	49,0	78-6	908
65	117,0	66,0	95-6	1.250
80	132,0	81,0	110-4	1.870
100	149,0	97,6	130-4	3.290
104	149,0	100,0	130-4	3.290