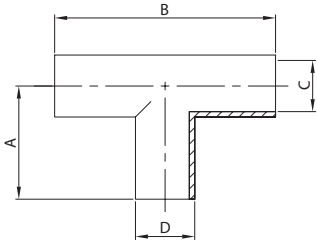




EXPANDING TEE

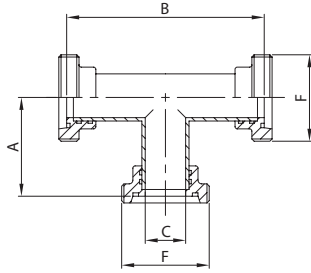
200 D



DN	A	B	C	D	gr
10	26,0	52,0	10,0	12,0	35
15	35,0	70,0	16,0	18,0	75
20	40,0	80,0	20,0	22,0	95
25	50,0	100,0	25,0	28,0	120
32	55,0	110,0	31,0	34,0	175
40	60,0	120,0	37,0	40,0	240
50	70,0	140,0	49,0	52,0	310
65	80,0	160,0	66,0	70,0	650
80	90,0	180,0	81,0	85,0	1.070
100	100,0	200,0	97,6	101,6	1.850
104	100,0	200,0	100,0	104,0	1.850
125	124,0	248,0	125,0	129,0	2.250

TEE MP/MP/MP. ED.

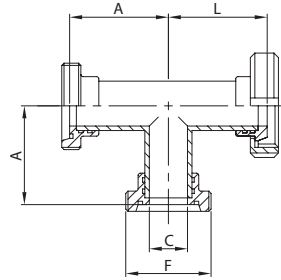
201 D



DN	A	B	C	F	gr
25	57,0	114,0	25,0	52-6	515
32	62,0	124,0	31,0	58-6	685
40	66,0	132,0	37,0	65-6	870
50	76,0	152,0	49,0	78-6	1.150
65	87,0	174,0	66,0	95-6	1.790
80	99,0	198,0	81,0	110-4	2.870
100	109,0	218,0	97,6	130-4	4.850
104	109,0	218,0	100,0	130-4	4.850

2  
TEE MP/MP/TR. N. ED.

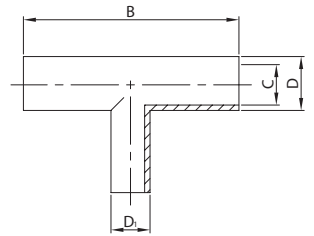
203 D



DN	A	C	F	L	gr
25	57,0	25,0	52-6	57,0	630
32	62,0	31,0	58-6	62,0	815
40	66,0	37,0	65-6	66,0	1.035
50	76,0	49,0	78-6	76,0	1.390
65	87,0	66,0	95-6	87,0	2.245
80	99,0	81,0	110-4	99,0	3.420
100	109,0	97,6	130-4	109,0	5.620
104	109,0	100,0	130-4	109,0	5.620

REDUCING TEE PE.

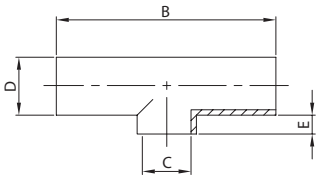
220 D



DN	B	C	D	D <sub>1</sub>	gr
32/25	110,0	31,0	34,0	28,0	175
40/25	120,0	37,0	40,0	28,0	240
40/32	120,0	37,0	40,0	34,0	240
50/25	140,0	49,0	52,0	28,0	310
50/32	140,0	49,0	52,0	34,0	310
50/40	140,0	49,0	52,0	40,0	310
65/40	160,0	66,0	70,0	40,0	650
65/50	160,0	66,0	70,0	52,0	650
80/65	180,0	81,0	85,0	70,0	1.070
100/80	200,0	97,6	101,6	85,0	1.850
104/80	200,0	100,0	104,0	85,0	1.850

WELDING TEE

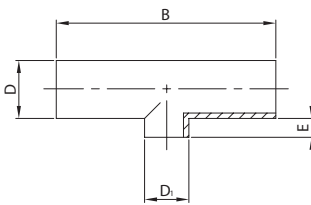
240 D



DN	B	C	D	E	gr
10	52,0	10,0	12,0	3,0	35
15	70,0	16,0	18,0	3,0	75
20	80,0	20,0	22,0	3,0	95
25	100,0	25,0	28,0	3,0	120
32	110,0	31,0	34,0	3,0	175
40	120,0	37,0	40,0	3,0	240
50	140,0	49,0	52,0	3,0	310
65	160,0	66,0	70,0	3,0	650
80	180,0	81,0	85,0	3,0	1.070
100	200,0	97,6	101,6	3,0	1.850
104	200,0	100,0	104,0	3,0	1.850
125	248,0	125,0	129,0	9,5	2.000

REDUCING TEE WG.

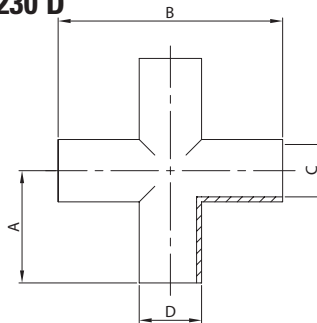
250 D



DN	B	D	D <sub>1</sub>	E	gr
32/25	110,0	34,0	28,0	3,0	175
40/25	120,0	40,0	28,0	3,0	240
40/32	120,0	40,0	34,0	3,0	240
50/25	140,0	52,0	28,0	3,0	310
50/32	140,0	52,0	34,0	3,0	310
50/40	140,0	52,0	40,0	3,0	310
65/40	160,0	70,0	40,0	3,0	650
65/50	160,0	70,0	52,0	3,0	650
80/65	180,0	85,0	70,0	3,0	1.070
100/80	200,0	101,6	85,0	3,0	1.850
104/80	200,0	104,0	85,0	3,0	1.850

EXPANDING CROSS

230 D



DN	A	B	C	D	gr
10	26,0	52,0	10,0	12,0	50
15	35,0	70,0	16,0	18,0	100
20	40,0	80,0	20,0	22,0	130
25	50,0	100,0	25,0	28,0	160
32	55,0	110,0	31,0	34,0	240
40	60,0	120,0	37,0	40,0	320
50	70,0	140,0	49,0	52,0	420
65	80,0	160,0	66,0	70,0	870
80	90,0	180,0	81,0	85,0	1.430
100	100,0	200,0	97,6	101,6	2.470
104	100,0	200,0	100,0	104,0	2.470