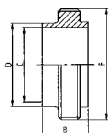


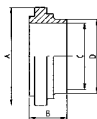


ΑΡΣΕΝΙΚΟ ΣΤΟΜΙΟ ΣΥΓΚΟΛ.  
WG. MALE PART  
NEZ FILET SR. LONG  
MACHO RACORD SR.

**102 I**


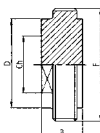
DN	B	C	D	F	gr
25	21,5	22,1	25,4	37-8	70
38	21,5	34,8	38,1	50-8	110
51	21,5	47,5	50,8	64-8	150
63	21,5	60,2	63,5	77-8	210
76	21,5	72,9	76,2	91-8	270
101	21,5	97,6	101,6	118-8	420

ΣΤΟΜΙΟ ΛΑΙΝΕΡ ΣΥΓΚΟΛ.  
WG. LINER  
DOUILLE SR. LONGUE  
CASQUILLO RACORD SR.

**112 I**


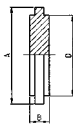
DN	A	B	C	D	gr
25	33,8	21,5	22,1	25,4	38
38	47,0	21,5	34,8	38,1	60
51	60,5	21,5	47,5	50,8	85
63	74,0	21,5	60,2	63,5	130
76	87,5	21,5	72,9	76,2	150
101	114,1	21,5	97,6	101,6	330

ΤΑΠΑ ΑΡΣΕΝΙΚΗ  
BLANK MALE  
OBTURATEUR FILETÉ  
MACHO R. CIEGO

**104 I**


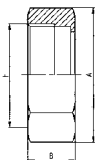
DN	B	Ch	D	F	gr
25	20,0	24,0	29,2	37-8	170
38	20,0	36,0	42,7	50-8	300
51	20,0	48,0	56,2	64-8	500
63	20,0	60,0	69,9	77-8	732
76	20,0	70,0	82,6	91-8	1.020
101	20,0	90,0	108,7	118-8	1.750

ΤΑΠΑ ΛΑΙΝΕΡ  
BLANK LINER  
OBTURATEUR  
CASQUILLO R. CIEGO

**114 I**


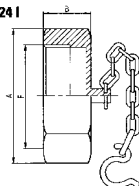
DN	A	B	D	gr
25	33,8	10,5	29,2	60
38	47,0	10,5	42,7	130
51	60,5	10,5	56,2	220
63	74,0	10,5	69,9	330
76	87,5	10,5	82,6	350
101	114,1	10,5	108,7	830

ΠΕΡΙΚΟΧΑΙΟ ΕΞΑΓΩΝΟ  
HEX NUT  
ECROU HEXAGONAL  
TUERCA EXAGONAL

**121 I**


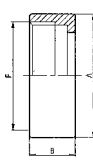
DN	A	B	F	gr
25	46,0	30,0	37-8	185
38	60,0	30,0	50-8	275
51	75,0	30,0	64-8	400
63	90,0	30,0	77-8	580
76	105,0	30,0	91-8	700
101	134,0	30,0	118-8	1.100

ΤΑΠΑ ΜΕ ΑΛΥΣΙΔΑ  
ROUND NUT + CHAIN  
ECROU BOUCHON + CH.  
TUERCA CIEGA + CAD.

**124 I**


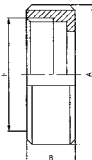
DN	A	B	F	gr
25	46,0	30,0	37-8	245
38	60,0	30,0	50-8	405
51	75,0	30,0	64-8	520
63	90,0	30,0	77-8	910
76	105,0	30,0	91-8	1.050
101	134,0	30,0	118-8	1.930

ΠΕΡΙΚΟΧΑΙΟ ΣΤΡΟΓΓΥΛΟ  
ROUND NUT  
ECROU ROND LISSE  
TUERCA REDONDA LISA

**122 I**


DN	A	B	F	gr
25	44,5	30,0	37-8	130
38	57,0	30,0	50-8	140
51	70,0	30,0	64-8	180
63	85,5	30,0	77-8	290
76	101,5	30,0	91-8	450
101	129,0	30,0	118-8	900

ΠΕΡΙΚΟΧΑΙΟ ΜΕ ΕΓΚΟΠΕΣ  
NOTCHES ROUND NUT  
ECROU A CRANS  
TUERCA REDONDA

**123 I**


DN	A	B	F	gr
25	48,0	30,0	37-8	165
38	64,0	30,0	50-8	255
51	77,0	30,0	64-8	310
63	91,0	30,0	77-8	360
76	106,0	30,0	91-8	500
101	135,0	30,0	118-8	900