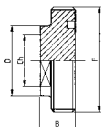


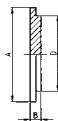


ΤΑΠΑ ΑΡΣΕΝΙΚΗ
BLANK MALE
OBTURATEUR FILETÉ
MACHO R. CIEGO

104 S


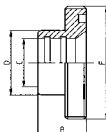
DN	B	Ch	D	F	gr
25	19,0	25,0	32,0	40-6	130
38	23,0	42,0	48,0	60-6	350
51	23,0	50,0	61,0	70-6	590
63	27,0	60,0	73,5	85-6	1.050
76	27,0	72,0	86,0	98-6	1.450
101	28,0	100,0	116,0	132-6	2.810
104	28,0	100,0	112,0	125-4	2.580

ΤΑΠΑ ΛΑΪΝΕΡ
BLANK LINER
OBTURATEUR
CASQUILLO R. CIEGO

114 S


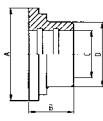
DN	A	B	D	gr
25	35,5	7,5	32,0	60
38	55,0	8,0	48,0	140
51	65,0	9,0	61,0	220
63	80,0	9,0	73,5	320
76	93,0	11,0	86,0	530
101	127,0	13,0	116,0	1.160
104	118,0	13,0	112,0	1.060

ΣΥΣΤΟΛΙΚΟ ΑΡΣΕΝΙΚΟ ΕΚΤ.
EG. MALE REDUCER
NEZ FILETÉ RÉDUIT DR.
MACHO R. REDUCCIÓN MR.

105 S


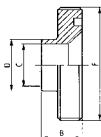
DN	B	C	D	F	gr
38/25	23,0	25,4	32,0	60-6	240
51/25	25,0	25,4	32,0	70-6	270
51/38	25,0	38,1	48,0	70-6	310
63/38	30,0	38,1	48,0	85-6	470
63/51	30,0	50,8	61,0	85-6	550
76/38	30,0	38,1	48,0	98-6	600
76/51	35,0	50,8	61,0	98-6	700
76/63	35,0	63,5	73,5	98-6	800
101/63	35,0	63,5	73,5	132-6	1.370
101/76	35,0	76,2	86,0	132-6	1.550

ΣΥΣΤΟΛΙΚΟ ΛΑΪΝΕΡ ΕΚΤ.
EG. LINER REDUCER
DOUILLE RÉDUITE DR.
CASQUILLO R. REDUC. MR.

115 S


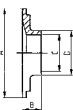
DN	A	B	C	D	gr
38/25	55,0	17,0	25,4	32,0	120
51/25	65,0	17,0	25,4	32,0	190
51/38	65,0	20,0	38,1	48,0	185
63/38	80,0	20,0	38,1	48,0	280
63/51	80,0	20,0	50,8	61,0	260
76/38	93,0	20,0	38,1	48,0	600
76/51	93,0	20,0	50,8	61,0	400
76/63	93,0	25,0	63,5	73,5	580
101/63	127,0	25,0	63,5	73,5	780
101/76	127,0	30,0	76,2	86,0	780

ΣΥΣΤΟΛΙΚΟ ΑΡΣΕΝΙΚΟ ΣΥΓΓ.
WG. MALE REDUCER
NEZ FILETÉ RÉDUIT SR.
MACHO R. REDUCCIÓN SR.

106 S


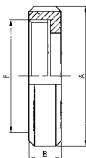
DN	B	C	D	F	gr
38/25	19,0	22,4	25,4	60-6	230
51/25	20,0	22,4	25,4	70-6	240
51/38	20,0	35,1	38,1	70-6	280
63/38	24,0	35,1	38,1	85-6	440
63/51	24,0	47,8	50,8	85-6	520
76/38	24,0	35,1	38,1	98-6	580
76/51	24,0	47,8	50,8	98-6	670
76/63	24,0	60,5	63,5	98-6	770
101/63	26,0	60,5	63,5	132-6	1.200
101/76	26,0	72,9	76,2	132-6	1.400

ΣΥΣΤΟΛΙΚΟ ΛΑΪΝΕΡ ΣΥΓΓ.
WG. LINER REDUCER
DOUILLE RÉDUITE SR.
CASQUILLO R. REDUC. SR.

116 S


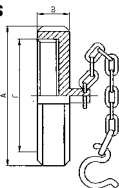
DN	A	B	C	D	gr
38/25	55,0	17,0	22,4	25,4	90
51/25	65,0	17,0	22,4	25,4	120
51/38	65,0	20,0	35,1	38,1	100
63/38	80,0	20,0	35,1	38,1	160
63/51	80,0	20,0	47,8	50,8	130
76/38	93,0	20,0	35,1	38,1	290
76/51	93,0	20,0	47,8	50,8	240
76/63	93,0	20,0	60,5	63,5	200
101/63	127,0	25,0	60,5	63,5	550
101/76	127,0	30,0	72,9	76,2	490

ΠΕΡΙΚΟΧΛΙΟ
ROUND NUT
ÉCROU
TUERCA

121 S


DN	A	B	F	gr
25	51,0	20,0	40-6	110
38	74,0	25,0	60-6	270
51	84,0	26,0	70-6	300
63	100,0	30,0	85-6	490
76	114,0	32,0	98-6	640
101	150,0	32,0	132-6	980
104	140,0	30,0	125-4	780

ΤΑΠΑ ΜΕ ΑΛΥΣΙΔΑ
ROUND NUT + CHAIN
ÉCROU BOUCHON + CH.
TUERCA CIEGA + CAD.

124 S


DN	A	B	F	gr
25	51,0	20,0	40-6	190
38	74,0	25,0	60-6	430
51	84,0	26,0	70-6	540
63	100,0	30,0	85-6	840
76	114,0	32,0	98-6	1.200
101	150,0	32,0	132-6	2.200
104	140,0	30,0	125-4	2.000