

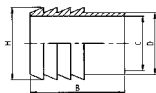


ΑΚΡΟΣΩΛΗΝΙΟ
 HOSE CONNECTION PE.
 MANCHON À LIGATURER
 MANGUITO MANGUERA EL.

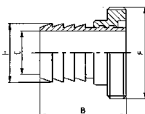
ΑΚΡΟΣΩΛΗΝΙΟ ΜΕ ΑΡΞΕΝΙΚΟ ΣΤΟΜΙΟ
 HOSE CONN. + MP. ED.
 NEZ FILETÉ À LIGATURER
 M. M. MACHO MD.

ΑΚΡΟΣΩΛΗΝΙΟ ΜΕ ΛΑΪΝΕΡ
 HOSE CONN. + L. ED.
 DOUILLE À LIGATURER
 M. M. CASQUILLO MD.

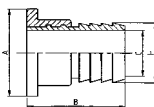
140 L



141 S



142 S



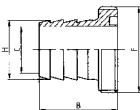
| DN | B | C | D | H | gr |
|-----|------|------|-------|-------|-------|
| 25 | 49,0 | 22,4 | 25,4 | 28,6 | 100 |
| 38 | 58,0 | 35,1 | 38,1 | 41,3 | 200 |
| 51 | 67,0 | 47,8 | 50,8 | 54,0 | 290 |
| 63 | 81,0 | 60,5 | 63,5 | 66,7 | 320 |
| 76 | 81,0 | 72,9 | 76,2 | 79,4 | 670 |
| 101 | 95,0 | 97,6 | 101,6 | 109,0 | 1.400 |

| DN | B | C | F | H | gr |
|-----|------|------|-------|-------|-------|
| 25 | 49,0 | 22,4 | 40-6 | 28,6 | 170 |
| 38 | 58,0 | 35,1 | 60-6 | 41,3 | 400 |
| 51 | 67,0 | 47,8 | 70-6 | 54,0 | 515 |
| 63 | 81,0 | 60,5 | 85-6 | 66,7 | 710 |
| 76 | 81,0 | 72,9 | 98-6 | 79,4 | 1.170 |
| 101 | 95,0 | 97,6 | 132-6 | 109,0 | 2.540 |

| DN | A | B | C | H | gr |
|-----|-------|------|------|-------|-------|
| 25 | 35,5 | 49,0 | 22,4 | 28,6 | 155 |
| 38 | 55,0 | 58,0 | 35,1 | 41,3 | 320 |
| 51 | 65,0 | 67,0 | 47,8 | 54,0 | 425 |
| 63 | 80,0 | 81,0 | 60,5 | 66,7 | 540 |
| 76 | 93,0 | 81,0 | 72,9 | 79,4 | 980 |
| 101 | 127,0 | 95,0 | 97,6 | 109,0 | 2.140 |

ΑΚΡΟΣΩΛΗΝΙΟ ΜΕ ΑΡΞΕΝΙΚΟ ΣΤΟΜΙΟ
 CONN. RUBBER ME.
 PORTE C. NEZ FILETÉ
 M. M. MACHO SR.

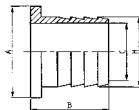
143 S



| DN | B | C | F | H | gr |
|-----|------|------|-------|-------|-------|
| 25 | 41,0 | 22,4 | 40-6 | 28,6 | 170 |
| 38 | 50,0 | 35,1 | 60-6 | 41,3 | 400 |
| 51 | 55,0 | 47,8 | 70-6 | 54,0 | 515 |
| 63 | 69,0 | 60,5 | 85-6 | 66,7 | 710 |
| 76 | 69,0 | 72,9 | 98-6 | 79,4 | 1.170 |
| 101 | 85,0 | 97,6 | 132-6 | 109,0 | 2.540 |

ΑΚΡΟΣΩΛΗΝΙΟ ΜΕ ΛΑΪΝΕΡ
 CONN. RUBBER PE.
 PORTE C. DOUILLE
 M. M. CASQUILLO SR.

144 S



| DN | A | B | C | H | gr |
|-----|-------|------|------|-------|-------|
| 25 | 35,5 | 33,5 | 22,4 | 28,6 | 145 |
| 38 | 55,0 | 39,0 | 35,1 | 41,3 | 320 |
| 51 | 65,0 | 44,0 | 47,8 | 54,0 | 425 |
| 63 | 80,0 | 54,0 | 60,5 | 66,7 | 540 |
| 76 | 93,0 | 56,0 | 72,9 | 79,4 | 980 |
| 101 | 127,0 | 71,0 | 97,6 | 109,0 | 2.140 |