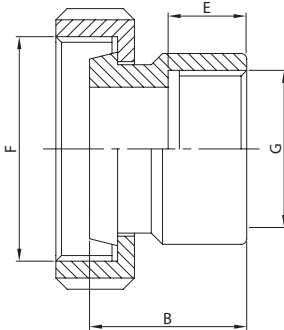
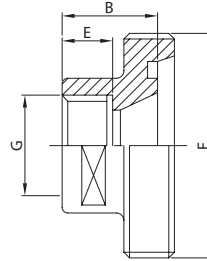
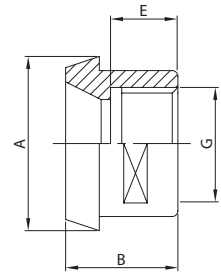

**DIN** **BSP**  
**TP. + N. I.D. T. BSP**
**162 D**


DN	B	E	F	G	gr
25	32,0	17,0	52-6	1"	325
32	35,0	17,0	58-6	1 1/4"	410
40	37,0	22,0	65-6	1 1/2"	500
50	41,0	22,0	78-6	2"	850
65	46,0	24,0	95-6	2 1/2"	1.245
80	49,0	27,0	110-4	3"	1.640
100	60,0	32,0	130-4	4"	2.200

**DIN** **BSP**  
**MALE PART I.D. T. BSP**
**163 D**


DN	B	E	F	G	gr
25	24,0	17,0	52-6	3/4"	50
32	28,0	17,0	58-6	1"	65
40	28,0	22,0	65-6	1 1/4"	120
50	33,0	22,0	78-6	1 1/2"	140
65	34,0	24,0	95-6	2"	180
80	37,0	27,0	110-4	2 1/2"	220
100	42,0	32,0	130-4	3 1/2"	290

**DIN** **BSP**  
**TAPER PART I.D. T. BSP**
**164 D**


DN	A	B	E	G	gr
25	44,0	22,0	17,0	3/4"	95
32	50,0	25,0	17,0	1"	120
40	56,0	26,0	22,0	1 1/4"	145
50	68,0	28,0	22,0	1 1/2"	210
65	86,0	32,0	24,0	2"	305
80	100,0	37,0	27,0	2 1/2"	390
100	121,0	44,0	32,0	3 1/2"	790