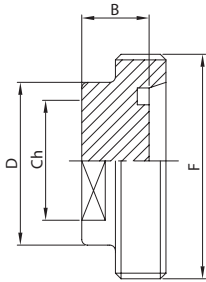
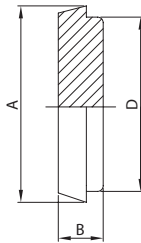
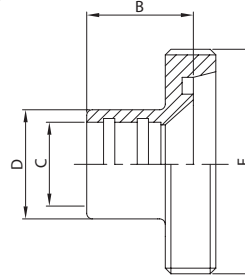
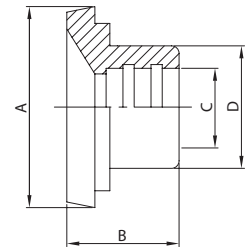


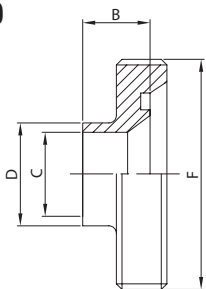
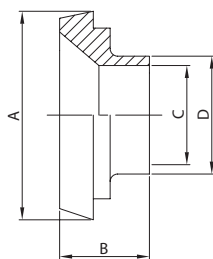
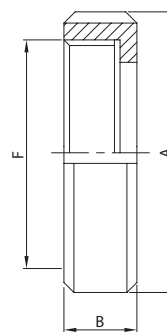
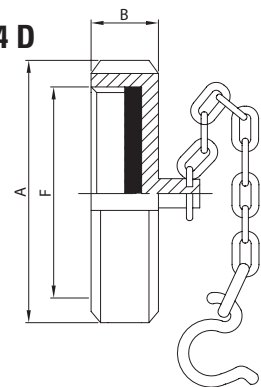
BLANK MALE
TAPER BLANK
EG. MALE REDUCER
EG. TAPER REDUCER
104 D

114 D

105 D

115 D


DN	B	Ch	D	F	gr
10	18,0	13,0	18,0	28-8	30
15	18,0	19,0	24,0	34-8	50
20	18,0	24,0	30,0	44-6	100
25	17,0	27,0	35,0	52-6	240
32	17,0	32,0	41,0	58-6	290
40	17,0	40,0	48,0	65-6	370
50	17,0	50,0	61,0	78-6	530
65	18,0	65,0	79,0	95-6	800
80	22,0	80,0	93,0	110-4	1.050
100	20,0	100,0	114,0	130-4	1.870

DN	A	B	D	gr
10	22,0	10,0	18,0	25
15	28,0	10,0	24,0	42
20	36,0	12,0	30,0	85
25	44,0	14,0	35,0	140
32	50,0	14,0	41,0	180
40	56,0	14,0	48,0	230
50	68,0	15,0	61,0	380
65	86,0	17,0	79,0	700
80	100,0	17,0	93,0	970
100	121,0	21,0	114,0	1.750
125	150,0	24,0	137,0	3.120
150	176,0	25,0	163,0	4.450

DN	B	C	D	F	gr
32/25	21,0	28,0	35,0	58-6	150
40/25	21,0	28,0	35,0	65-6	200
40/32	23,0	34,0	41,0	65-6	200
50/25	27,0	28,0	35,0	78-6	260
50/32	27,0	34,0	41,0	78-6	340
50/40	28,0	40,0	48,0	78-6	300
65/40	28,0	40,0	48,0	95-6	440
65/50	32,0	52,0	61,0	95-6	460
80/65	34,0	70,0	79,0	110-4	720
100/80	35,0	85,0	93,0	130-4	1.200

DN	A	B	C	D	gr
32/25	50,0	25,0	28,0	35,0	140
40/25	56,0	25,0	28,0	35,0	180
40/32	56,0	28,0	34,0	41,0	180
50/25	68,0	28,0	28,0	35,0	280
50/32	68,0	28,0	34,0	41,0	280
50/40	68,0	31,0	40,0	48,0	300
65/40	86,0	32,0	40,0	48,0	500
65/50	86,0	33,0	52,0	61,0	500
80/65	100,0	38,0	70,0	79,0	540
100/80	121,0	41,0	85,0	93,0	980

WG. MALE REDUCER
WG. TAPER REDUCER
ROUND NUT
ROUND NUT + CHAIN
106 D

116 D

121 D

124 D


DN	B	C	D	F	gr
32/28	23,0	25,0	28,0	58-6	160
40/28	23,0	25,0	28,0	65-6	210
40/34	25,0	31,0	34,0	65-6	220
50/28	25,0	25,0	28,0	78-6	220
50/34	25,0	31,0	34,0	78-6	330
50/40	25,0	37,0	40,0	78-6	330
65/40	28,0	37,0	40,0	95-6	460
65/52	29,0	49,0	52,0	95-6	610
80/70	33,0	66,0	70,0	110-4	840
100/85	35,0	81,0	85,0	130-4	1.250

DN	A	B	C	D	gr
32/28	50,0	18,0	25,0	28,0	135
40/28	56,0	18,0	25,0	28,0	185
40/34	56,0	18,0	31,0	34,0	200
50/28	68,0	19,0	25,0	28,0	285
50/34	68,0	19,0	31,0	34,0	275
50/40	68,0	19,0	37,0	40,0	280
65/40	86,0	21,0	37,0	40,0	515
65/52	86,0	21,0	49,0	52,0	480
80/70	100,0	21,0	66,0	70,0	625
100/85	121,0	25,0	81,0	85,0	880

DN	A	B	F	gr
10	38,0	18,0	28-8	70
15	44,0	18,0	34-8	98
20	54,0	21,0	44-6	150
25	63,0	21,0	52-6	160
32	70,0	21,0	58-6	190
40	78,0	21,0	65-6	240
50	92,0	22,0	78-6	320
65	112,0	25,0	95-6	540
80	127,0	30,0	110-4	770
100	148,0	31,0	130-4	990
125	178,0	35,0	160-4	1.400
150	210,0	41,0	190-4	1.800

DN	A	B	F	gr
10	38,0	18,0	28-8	100
15	44,0	18,0	34-8	120
20	54,0	21,0	44-6	180
25	63,0	21,0	52-6	200
32	70,0	21,0	58-6	250
40	78,0	21,0	65-6	290
50	92,0	22,0	78-6	370
65	112,0	25,0	95-6	700
80	127,0	30,0	110-4	970
100	148,0	31,0	130-4	1.400
125	178,0	35,0	160-4	1.800
150	210,0	41,0	190-4	2.200