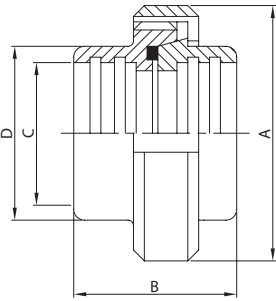
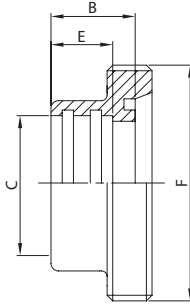
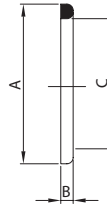


EG. UNION
100 D


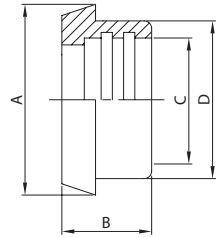
DN	A	B	C	D	gr
10	38,0	35,0	12,0	18,0	135
15	44,0	35,0	18,0	24,0	184
20	54,0	37,0	22,0	30,0	319
25	63,0	45,0	28,0	35,0	377
32	70,0	51,0	34,0	41,0	470
40	78,0	53,0	40,0	48,0	585
50	92,0	57,0	52,0	61,0	800
65	112,0	65,0	70,0	79,0	1.215
80	127,0	75,0	85,0	93,0	1.750
100	148,0	89,0	101,6	114,0	2.770
104	148,0	89,0	104,0	114,0	2.770

EG. MALE PART
101 D


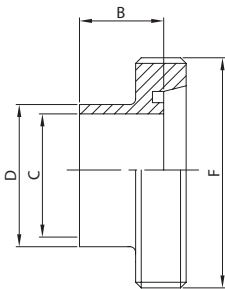
DN	B	C	E	F	gr
10	17,0	12,0	12,0	28-8	40
15	17,0	18,0	12,0	34-8	55
20	18,0	22,0	12,0	44-6	110
25	22,0	28,0	15,0	52-6	130
32	25,0	34,0	18,0	58-6	170
40	26,0	40,0	20,0	65-6	210
50	28,0	52,0	22,0	78-6	280
65	32,0	70,0	25,0	95-6	380
80	37,0	85,0	28,0	110-4	600
100	44,0	101,6	35,0	130-4	1.000
104	44,0	104,0	35,0	130-4	1.000

**O-RING
SEAL RING FOR UNION**
131 D


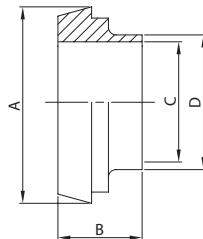
DN	A	B	C
10	20,0	4,0	12,0
15	26,0	4,0	18,0
20	33,0	4,0	23,0
25	40,0	5,0	30,0
32	46,0	5,0	36,0
40	52,0	5,0	42,0
50	64,0	5,0	54,0
65	81,0	5,0	71,0
80	95,0	5,0	85,0
100/104	114,0	5,0	104,0
125	142,0	6,0	130,0
150	167,0	6,0	155,0

EG. TAPER PART
111 D


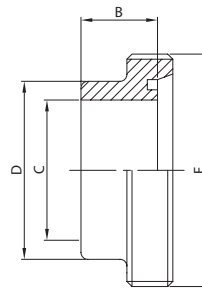
DN	A	B	C	D	gr
10	22,0	17,0	12,0	18,0	25
15	28,0	17,0	18,0	24,0	30
20	36,0	18,0	22,0	30,0	60
25	44,0	22,0	28,0	35,0	85
32	50,0	25,0	34,0	41,0	110
40	56,0	26,0	40,0	48,0	135
50	68,0	28,0	52,0	61,0	200
65	86,0	32,0	70,0	79,0	295
80	100,0	37,0	85,0	93,0	380
100	121,0	44,0	101,6	114,0	780
104	121,0	44,0	104,0	114,0	780

WG. MALE PART
102 D


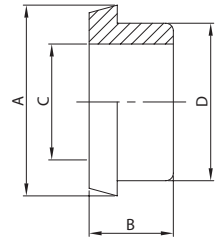
DN	B	C	D	F	gr
10	17,0	10,0	12,0	28-8	30
15	17,0	16,0	18,0	34-8	50
20	18,0	20,0	22,0	44-6	100
25	22,0	25,0	28,0	52-6	120
32	25,0	31,0	34,0	58-6	150
40	26,0	37,0	40,0	65-6	180
50	28,0	49,0	52,0	78-6	240
65	32,0	66,0	70,0	95-6	340
80	37,0	81,0	85,0	110-4	540
100	44,0	97,6	101,6	130-4	740
104	44,0	100,0	104,0	130-4	740

WG. TAPER PART
112 D


DN	A	B	C	D	gr
10	22,0	17,0	10,0	12,0	20
15	28,0	17,0	16,0	18,0	30
20	36,0	18,0	20,0	22,0	60
25	44,0	22,0	25,0	28,0	90
32	50,0	25,0	31,0	34,0	100
40	56,0	26,0	37,0	40,0	120
50	68,0	28,0	49,0	52,0	180
65	86,0	32,0	66,0	70,0	280
80	100,0	37,0	81,0	85,0	380
100	121,0	44,0	97,6	101,6	660
104	121,0	44,0	100,0	104,0	660

WG. MALE PART
117 D


DN	B	C	D	F	gr
10	17,0	10,0	18,0	28-8	40
15	17,0	16,0	24,0	34-8	60
20	18,0	20,0	30,0	44-6	120
25	22,0	25,0	35,0	52-6	140
32	25,0	31,0	41,0	58-6	180
40	26,0	37,0	48,0	65-6	240
50	28,0	49,0	61,0	78-6	360
65	32,0	66,0	79,0	95-6	420
80	37,0	81,0	93,0	110-0	670
100	44,0	97,6	114,0	130-4	1.240
104	44,0	100,0	114,0	130-4	1.240
125	23,0	125,0	137,0	160-4	1.600
150	37,0	150,0	163,0	190-4	2.000

WG. THICK TAPER PART
119 D


DN	A	B	C	D	gr
10	22,0	17,0	10,0	18,0	30
15	28,0	17,0	16,0	24,0	40
20	36,0	18,0	20,0	30,0	70
25	44,0	22,0	25,0	35,0	100
32	50,0	25,0	31,0	41,0	140
40	56,0	26,0	37,0	48,0	180
50	68,0	28,0	49,0	61,0	230
65	86,0	32,0	66,0	79,0	360
80	100,0	37,0	81,0	93,0	500
100	121,0	44,0	97,6	114,0	910
104	121,0	44,0	100,0	114,0	910
125	150,0	23,0	125,0	137,0	1.300
150	176,0	37,0	150,0	163,0	1.800